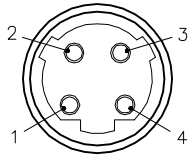
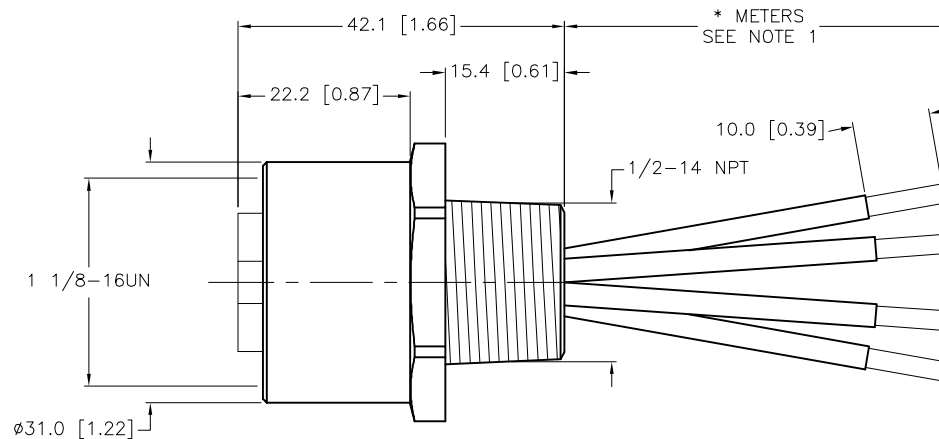
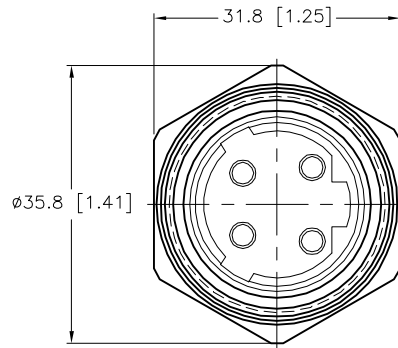


FEMALE END VIEW



- 1 = BLACK #1
2 = BLACK #2
3 = BLACK #3
4 = GREEN/YELLOW



SPECIFICATIONS

CONTACT CARRIER MATERIAL	PVC
CONTACT MATERIAL/PLATING	BRASS/GOLD
HOUSING MATERIAL/PLATING	BRASS/NICKEL
RATED CURRENT [A]	25.0 A
RATED VOLTAGE [V]	600 V
CONDUCTOR INSULATION MATERIAL	XLPE
NUMBERS OF CONDUCTORS [AWG]	4x12 AWG
TEMPERATURE RATING	-40°C to +105°C (-40°F to +221°F)
PROTECTION CLASS	NEMA 1,3,4,6P,12 & IECIP67, IP68,IP69,IP69K

CABLE LENGTH	TOLERANCE*
ALL LENGTHS	+ 4% (OR 50mm) OF LENGTH - 0% (OR 0mm) OF LENGTH WHICHEVER IS GREATER
STRIP LENGTH	TOLERANCE*
0-7mm	±0.5mm
8-29mm	±1.0mm
30-49mm	±2.0mm
50-69mm	±3.0mm
70-100mm	±4.0mm
OVER 100mm	±5.0mm
* UNLESS OTHERWISE SPECIFIED	

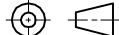

NOTES:

1. "*" INDICATES LEAD LENGTH IN METERS. CONTACT TURCK TO ORDER SPECIFIC LENGTHS.
2. "/S3063" DESIGNATES CUSTOM WIRING. COLOR CODE OF ALL NUMBERED BLACK WIRES WITH GREEN/YELLOW GROUND WIRE.



CAUTION:
RISK OF ELECTRICAL SHOCK
DO NOT DISCONNECT UNDER LOAD

SOURCE DRAWING - FOR REFERENCE ONLY

RELATED DOCUMENTS 1. 2. 3. 4.	3RD ANGLE PROJECTION			THIS DRAWING IS CONFIDENTIAL AND THE PROPERTY OF TURCK INC. USE OF THIS DOCUMENT WITHOUT WRITTEN PERMISSION IS PROHIBITED.		 <div>3000 CAMPUS DRIVE MINNEAPOLIS, MN 55441 1-800-544-7769 (763) 553-7300 (763) 553-0708 fax www.turck.us</div>	
MATERIAL SEE SPECIFICATIONS	ALL DIMENSIONS DISPLAYED ON THIS DRAWING ARE FOR REFERENCE ONLY	DRFT	NF	DATE	07/20/18		DESCRIPTION RKFC 42-*M/14.5/NPT/S3063
FINISH SEE SPECIFICATIONS		APVD	L.H.	SCALE	1=1.0		
		UNIT OF MEASUREMENT				IDENTIFICATION NO.	
		MILLIMETER [INCH]				REV	
		DO NOT SCALE THIS DRAWING				B	
	CONTACT TURCK FOR MORE INFORMATION	FILE: 777041884				SHEET 1 OF 1	

B	UPDATE PROTECTION CLASS	CBM	04/13/21	76628
REV	DESCRIPTION	BY	DATE	ECO NO.